

# NONINVASIVE + AUTOMATED = COST & TIME EFFICIENT

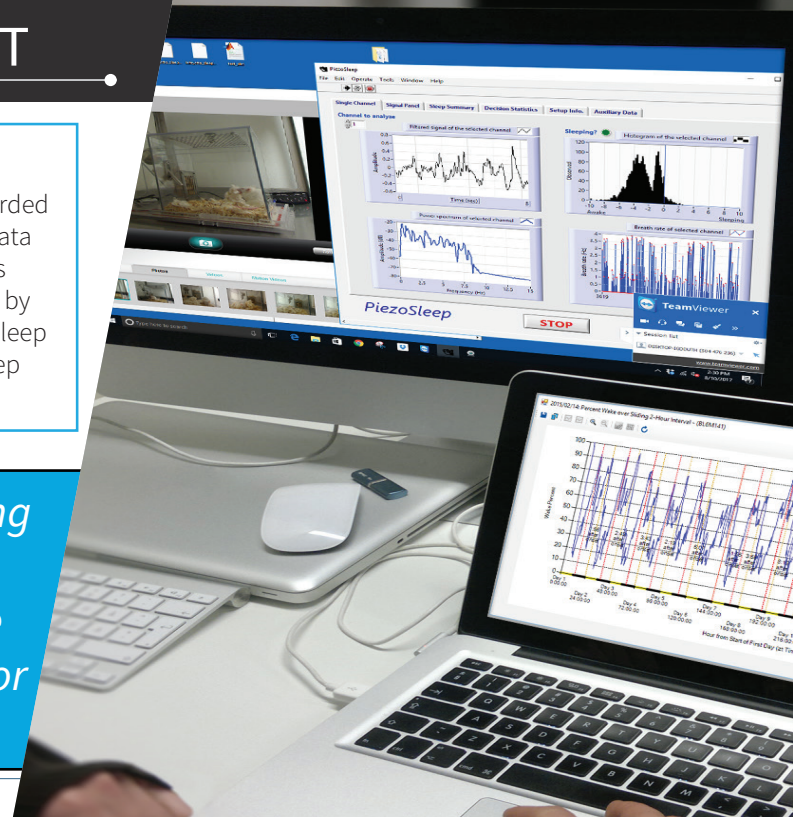
## Non-invasive Alternative to EEG/EMG Sleep Scoring

SleepStats analysis software classifies the piezoelectric signal into "Sleep" or "Wake" every 2 seconds. A combination of features, extracted from the piezo signal, are used to classify the data into the two states. System Validation: The classifier was validated by comparing its results against the gold standard method of human sleep scoring of EEG/EMG.

Simultaneous piezoelectric and EEG/EMG data was recorded for twenty-four hours from twenty mice. The EEG/EMG data was independently scored by two trained human scorers and compared against the sleep/wake scores generated by SleepStats. Recall/sensitivity for detection is **91.4%** for sleep and **92.3%** for wake. Specificity of calls is **91.4%** for sleep and **92.3%** of wake.



*The PiezoSleep Behavioral Tracking System integrates piezoelectric sensor, data acquisition hardware and software with custom cages for automated sleep/wake scoring.*



## PiezoSleep Behavioral Tracking System Applications

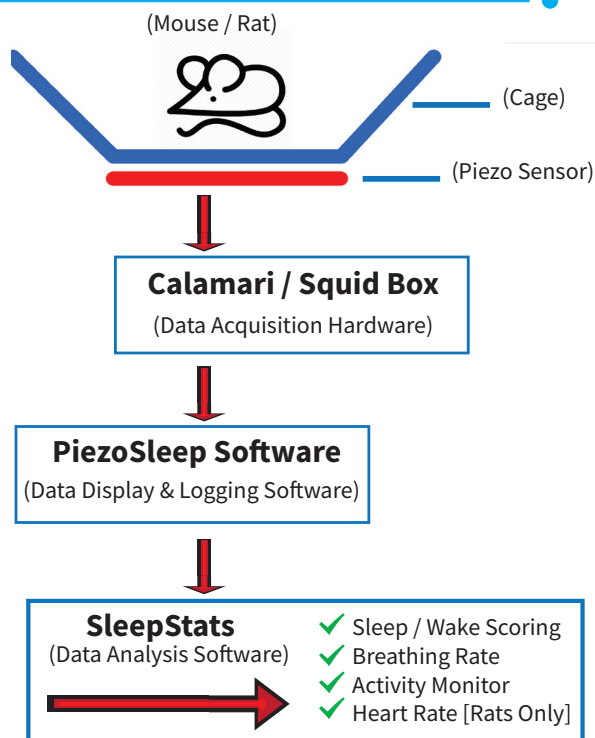
### Currently Being Used for

- ✓ Sleep studies:
  - Basic research
  - Disease models
  - Preclinical drug testing
- ✓ Sleep phenotyping
- ✓ Respiratory rate tracking
- ✓ Activity tracking

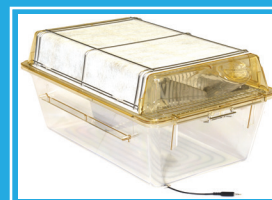
### Potential System Uses and Features

- ✓ Providing real-time feedback control for:
  - Targeted sleep disruption
  - Sleep apnea simulation
  - Optogenetics applications
- ✓ Heart rate tracking
- ✓ Seizure detection

## System Basics



## What's New



### Rat System

Complete Piezo system now available for rats



### Mouse System

System modified for use with traditional mouse housing



### MouseQwake

Non-invasively detects targeted behavioral states & shakes the cage to disrupt behavior. Adjustable amplitude & frequency.