

## About Our Company...

Signal Solutions, LLC specializes in non-invasive solutions for animal research.

The PiezoSleep Behavioral Tracking System integrates piezoelectric sensor, data acquisition hardware and software with custom cages for automated behavior scoring.

Our system uniquely enables noninvasive real-time sleep feedback control to improve experimental models, such as targeted sleep disruption, sleep apnea simulation, and optogenetic applications.

The PiezoSleep system and customized solutions have aided researchers worldwide in areas of gene and disease model phenotyping, drug testing, sleep biology, heart rate and breath monitoring and seizure detection.

## About Our System...

### Non-invasive

Piezoelectric sensor reduces need for surgery and implants required for EEG recording.

### Automated

PiezoSleep data collection software automatically records sleep and wake states. It saves time by eliminating the need for tedious human scoring of EEG/EMG.

### Cost & Time Effective

Automated scoring and lower cost of entry make our complete, turn-key systems more attractive for new and experienced sleep researchers.

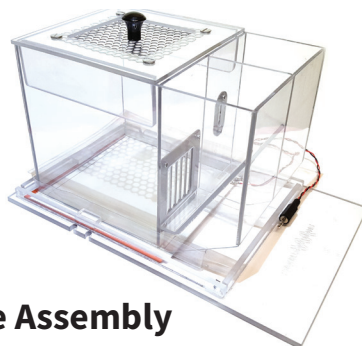
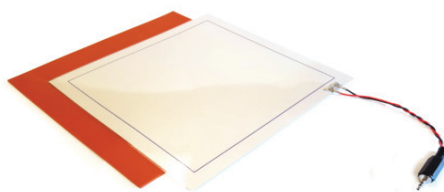
### Giant SquidBox



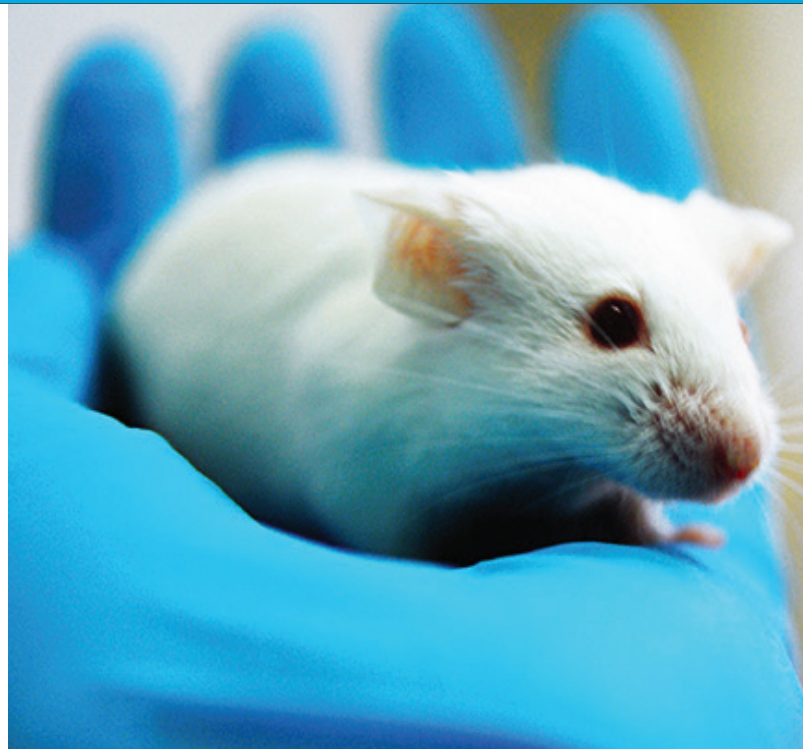
### Calamari



### Piezoelectric Sensor



Cage Assembly



## PiezoSleep Behavioral Tracking System

**SIGNALSOLUTIONS**

Sensor Systems, Software, Sleep

Non-invasive  
Innovation

Signal Solutions LLC - 1-877-SIGSOLN (Toll free)  
www.sigsoIn.com